

## Quantikine® Human Pentraxin 3 ELISA

Pentraxin 3 (PTX3), also known as Tumor Necrosis Factor-Stimulated Gene 14 (TSG-14), is a long pentraxin belonging to the pentraxin superfamily.<sup>1,2</sup> Pentraxins are multi-functional pattern-recognition proteins that have a characteristic pentagonal discoid arrangement. PTX3 forms decamers and higher-order multimers through the use of interchain disulfide bonds.<sup>4</sup> PTX3 is induced in response to pro-inflammatory stimuli and Toll-like Receptor (TLR) engagement.<sup>1-7</sup> It is secreted by a variety of cell types including macrophages, neutrophils, fibroblasts, adipocytes, myeloid-derived dendritic, ovarian granulosa, endothelial, renal mesangial, synovial, smooth muscle, alveolar epithelial, and glial cells.<sup>1-6,8,9</sup> PTX3 is an acute phase protein and increases rapidly in plasma during inflammatory and infectious conditions.<sup>1,2</sup> PTX3 is present in atherosclerotic lesions and is sometimes increased in plasma following myocardial infarction.<sup>10</sup>

High affinity binding of PTX3 to its soluble ligands plays an important role in several physiological conditions, ranging from innate immunity to female fertility.<sup>1-15</sup> PTX3 interacts with selected viral, fungal, and bacterial components, providing protection from infection and may act as an opsonin.<sup>6,7,12,13</sup> While PTX3 enhances C1q binding on apoptotic cells and facilitates the complement-mediated

clearance of these cells, it can also bind apoptotic cells and inhibit their uptake by dendritic cells, preventing the onset of an autoimmune response.<sup>14,15</sup> Finally, PTX3 may play a role in vascularization. The N-terminal extension of PTX3 has been shown to bind FGF basic and inhibit FGF basic-dependent angiogenesis.<sup>9</sup>

The Quantikine PTX3 Immunoassay is a 5 hour solid-phase ELISA designed to measure human PTX3 in cell culture supernates, plasma, and saliva.

### References

1. Bottazzi, B. *et al.* (2006) *J. Leukoc. Biol.* **79**:909.
2. Wisniewski, H. and J. Vilcek (2004) *Cytokine Growth Factor Rev.* **15**:129.
3. Introna, M. *et al.* (1996) *Blood* **87**:1862.
4. Bottazzi, B. *et al.* (1997) *J. Biol. Chem.* **272**:32817.
5. Polentarutti, N. *et al.* (2000) *J. Neuroimmunol.* **106**:87.
6. Jaillon, S. *et al.* (2007) *J. Exp. Med.* **204**:793.
7. Jeannin, P. *et al.* (2005) *Immunity* **22**:551.
8. Salustri, A. *et al.* (2004) *Development* **131**:1577.
9. Camozzi, M. *et al.* (2005) *Arterioscler. Thromb. Vasc. Biol.* **25**:1837.
10. Latini, R. *et al.* (2004) *Circulation* **110**:2349.
11. Nauta, A.J. *et al.* (2003) *Eur. J. Immunol.* **33**:465.
12. Garlanda, C. *et al.* (2002) *Nature* **420**:182.
13. Diniz, S.N. *et al.* (2004) *J. Leukoc. Biol.* **75**:649.
14. Baruah, P. *et al.* (2006) *J. Leukoc. Biol.* **80**:87.
15. Rovere, P. *et al.* (2000) *Blood* **96**:4300.26.

## ELISA & Activity Assay Kits

### Quantikine ELISA Kits

Analyte	Species	Sensitivity	Range	Catalog #	Size
CXCL8/IL-8	Canine	4.31 pg/mL	15.6-1000 pg/mL	CA8000	1 Kit
MMP-9 Total	Mouse	0.014 ng/mL	0.078-5 ng/mL	MMPT90	1 Kit
Myeloperoxidase	Human	0.618 ng/mL	1.56-100 ng/mL	DMYE00	1 Kit
Papalysin-1/PAPP-A	Human	0.116 ng/mL	0.781-50 ng/mL	DPPA00	1 Kit
Pentraxin 3/TSG-14	Human	0.116 ng/mL	0.31-20 ng/mL	DPTX30	1 Kit
RBP4	Human	0.628 ng/mL	1.56-100 ng/mL	DRB400	1 Kit
Relaxin-2	Human	4.57 pg/mL	7.81-500 pg/mL	DRL200	1 Kit
TSLP	Human	9.87 pg/mL	31.2-2000 pg/mL	DTSLP0	1 Kit

## Contents

<b>Recombinant &amp; Natural Proteins</b>	pages ..... 2-3
<b>Fluorogenic Peptide Substrates</b>	page ..... 3
<b>Polyclonal Antibodies</b>	pages ..... 4-5
<b>Monoclonal Antibodies</b>	pages ..... 6-7
<b>Labeled Antibodies</b>	page ..... 8-9
<b>Antibody Controls</b>	page ..... 9
<b>NorthernLights™ Secondary Antibodies</b>	page ..... 10
<b>Cell Culture Media &amp; Supplements</b>	page ..... 10
<b>Apoptosis &amp; Cell Viability Detection Assays</b>	page ..... 10
<b>Cultrex® Basement Membrane Extracts</b>	page ..... 10
<b>DNA Damage &amp; Repair Enzymes</b>	page ..... 10
<b>Primer Pairs</b>	page ..... 10
<b>ELISA &amp; Activity Assay Development Kits</b>	page ..... 11



## Recombinant & Natural Proteins

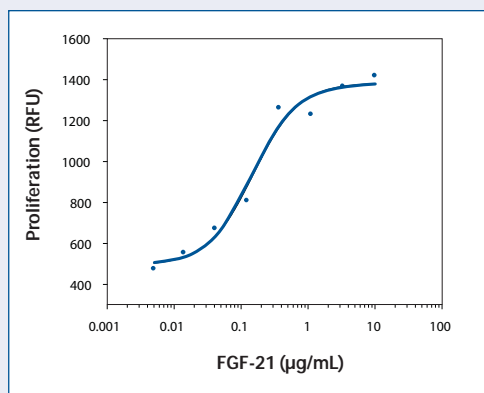
Protein	Species	Source	Catalog #	Size
5'-Nucleotidase/CD73	Mouse	CHO	4488-EN-010	10 µg
ACE-2	Rat	NS0	4516-ZN-010	10 µg
Activin RIB/ALK-4, Fc Chimera	Mouse	NS0	1477-AR-050	50 µg
ADAMTS4	Human	CHO	4307-AD-020	20 µg
ADAMTS13	Human	CHO	4245-AD-020	20 µg
Apolipoprotein E R2	Human	CHO	3520-AR-050	50 µg
Arylsulfatase B/ARSB	Human	CHO	4415-SU-010	10 µg
ASAH2/N-acylsphingosine Amidohydrolase-2	Human	CHO	3557-AH-010	10 µg
ASGPR1	Human	NS0	4394-AS-050	50 µg
B7-H4/Fc Chimera	Mouse	NS0	4206-B7-100	100 µg
BLAME/SLAMF8	Human	NS0	1907-BL-050	50 µg
BMP-10 Propeptide	Human	NS0	3956-BP-050	50 µg
Brevican	Human	NS0	4009-BC-050	50 µg
CD39/ENTPD1	Human	CHO	4397-EN-010	10 µg
CD39/ENTPD1	Mouse	NS0	4398-EN-010	10 µg
CD99/Fc Chimera	Human	NS0	3968-CD-050	50 µg
CD109	Human	NS0	4385-CD-050	50 µg
CD229/SLAMF3	Human	NS0	1898-CD-050	50 µg
CEACAM-5/CD66e	Human	NS0	4128-CM-050	50 µg
COCO	Mouse	<i>E. coli</i>	3356-CC-025	25 µg
DDR1/Fc Chimera	Human	NS0	2396-DR-050	50 µg
Dkk-2	Mouse	<i>Sf21</i>	2435-DK-010	10 µg
DMC/VCC-1	Mouse	<i>E. coli</i>	4270-DM-025	25 µg
EGF Pro Form aa 21 - 1023	Human	NS0	4289-EG-025	25 µg
EGFL6	Mouse	NS0	4329-EG-025	25 µg
EMAP-II Pro Form	Mouse	<i>E. coli</i>	2026-EM-050	50 µg
ErbB4/Fc Chimera	Mouse	NS0	4387-ER-050	50 µg
Fetuin B	Human	NS0	1725-PI-050	50 µg
FGF basic 145 aa Tissue Culture Grade	Human	<i>E. coli</i>	4114-TC-01M	1 mg
FGF-21	Human	<i>E. coli</i>	2539-FG-025	25 µg
Ficolin-1	Human	NS0	4209-FC-050	50 µg
Ficolin-3	Human	NS0	2367-FC-050	50 µg
IFN-α1	Mouse	<i>E. coli</i>	12105-1	100000 U
IFN-α4	Human	<i>E. coli</i>	11177-1	100000 U
IFN-α4	Mouse	<i>E. coli</i>	12110-1	100000 U
IFN-α11	Mouse	<i>E. coli</i>	12125-1	100000 U
IFN-α13	Mouse	<i>E. coli</i>	12130-1	100000 U
IFN-κ	Human	<i>E. coli</i>	11450-1	50 µg
IGF-I	Rat	<i>E. coli</i>	4326-RG-050	50 µg
IGSF4B	Human	NS0	3678-S4-050	50 µg
IGSF4D	Human	NS0	4290-S4-050	50 µg
IL-17F	Rat	<i>E. coli</i>	4437-IL-025	25 µg
IL-20 Rβ/Fc Chimera	Mouse	NS0	4388-MR-050	50 µg
Langerin	Human	NS0	2088-LN-050	50 µg

## Recombinant & Natural Proteins

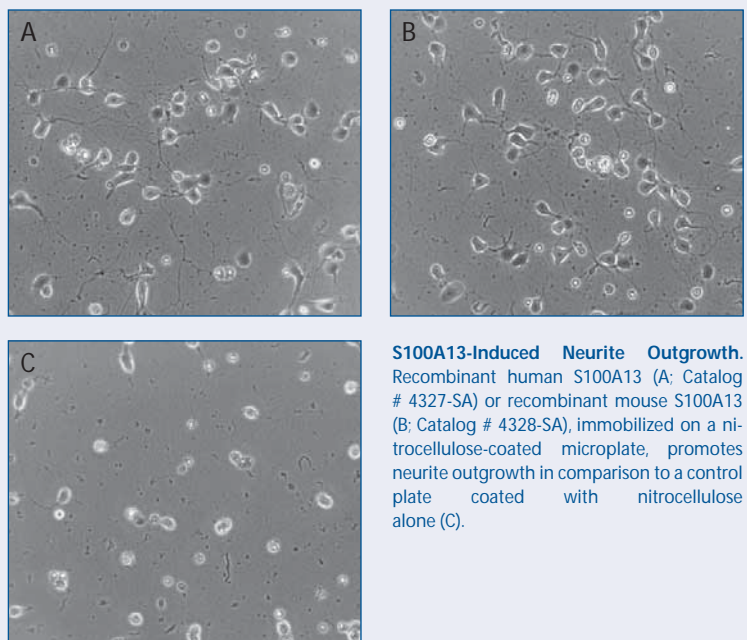
Protein	Species	Source	Catalog #	Size
LDL R	Mouse	NS0	2255-LD-025	25 µg
LRPAP	Human	<i>E. coli</i>	4296-LR-050	50 µg
MARCO	Mouse	NS0	2956-MA-050	50 µg
Nephronectin	Mouse	NS0	4298-NP-050	50 µg
OSM R β/Fc Chimera	Human	NS0	4389-OR-050	50 µg
Prolyl Oligopeptidase/PREP	Human	<i>Sf</i> 21	4308-SE-010	10 µg
S100A13	Human	<i>E. coli</i>	4327-SA-050	50 µg
S100A13	Mouse	<i>E. coli</i>	4328-SA-050	50 µg
SHP-2	Human	<i>E. coli</i>	1894-SH-100	100 µg
SorCS1	Mouse	NS0	4395-SR-050	50 µg
SorCS2	Mouse	NS0	4237-SR-050	50 µg
SorCS3	Mouse	NS0	3067-SR-050	50 µg
SP-D	Human	NS0	1920-SP-050	50 µg
Thrombopoietin R	Human	CHO	4444-TR-050	50 µg
Thymosin α1/PTMA	Human	Synthetic	11976-1	500 µg
TLR2	Human	NS0	2616-TR-050	50 µg
TNF RI/TNFRSF1A	Canine	<i>E. coli</i>	4017-TR-025	25 µg
Transglutaminase 2	Human	<i>Sf</i> 21	4376-TG-050	50 µg
TSG-6	Human	NS0	2104-TS-050	50 µg

## Fluorogenic Peptide Substrates

Product	Catalog #	Size
Deacetylase Substrate, Ac-RGK(Ac)-AMC	ES016	5 mg



**FGF-21-Induced Proliferation.** Recombinant human FGF-21 (Catalog # 2539-FG) induces dose-dependent fibroblast proliferation in the presence of 5 µg/mL recombinant mouse Klotho β (Catalog # 2619-KB). The cell number was assessed in a fluorometric assay using the redox sensitive dye, resazurin (Catalog # AR002).



**S100A13-Induced Neurite Outgrowth.** Recombinant human S100A13 (A; Catalog # 4327-SA) or recombinant mouse S100A13 (B; Catalog # 4328-SA), immobilized on a nitrocellulose-coated microplate, promotes neurite outgrowth in comparison to a control plate coated with nitrocellulose alone (C).

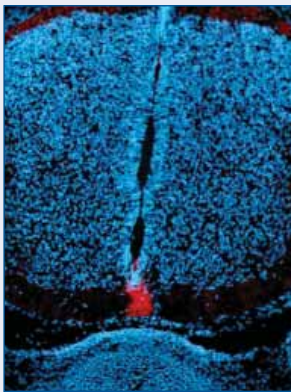
## Polyclonal Antibodies

Antibody	Species	Type	Catalog #	Size
14-3-3ε	Human/Mouse/Rat	Goat IgG	AF4419	100 µg
14-3-3η	Human/Mouse/Rat	Goat IgG	AF4420	100 µg
14-3-3σ	Human/Mouse/Rat	Goat IgG	AF4424	100 µg
14-3-3θ	Human/Mouse/Rat	Goat IgG	AF4425	100 µg
Apolipoprotein C2	Human	Sheep IgG	AF4497	100 µg
Apolipoprotein M	Human	Sheep IgG	AF4550	100 µg
β-Arrestin 1	Human	Goat IgG	AF4560	100 µg
β-Arrestin 2	Human	Goat IgG	AF4564	100 µg
ASAH2/N-acylsphingosine Amidohydrolase-2	Human/Mouse/Rat	Sheep IgG	AF3557	100 µg
ATF1	Human/Mouse	Goat IgG	AF4370	100 µg
ATF2	Human/Mouse	Goat IgG	AF4455	100 µg
CaMKKα	Human/Rat	Sheep IgG	AF4536	100 µg
CCK4	Human/Mouse/Rat	Goat IgG	AF4499	100 µg
CEACAM-3/CD66d	Human	Sheep IgG	AF4166	100 µg
CEACAM-5/CD66e	Human	Sheep IgG	AF4128	100 µg
CK1α	Human/Mouse/Rat	Sheep IgG	AF4569	100 µg
CK1δ	Human/Mouse/Rat	Sheep IgG	AF4568	100 µg
CK1ε	Human/Mouse/Rat	Sheep IgG	AF4567	100 µg
CK2β	Human/Mouse/Rat	Sheep IgG	AF4380	100 µg
Clock	Human	Sheep IgG	AF4026	100 µg
Cytosol Nonspecific Dipeptidase/CNDP2	Human	Sheep IgG	AF3560	100 µg
Cyclin D1/D2	Human/Mouse	Goat IgG	AF4196	100 µg
DAXX	Human	Goat IgG	AF4548	100 µg
DDX-17	Human	Goat IgG	AF4530	100 µg
DMP-1	Mouse	Sheep IgG	AF4386	100 µg
ECM-1	Human	Sheep IgG	AF3937	100 µg
EphB6	Human	Sheep IgG	AF3384	100 µg
Phospho-specific FAK (Y397)	Human	Rabbit IgG	AF4528	100 µg
FAK	Human/Mouse/Rat	Sheep IgG	AF4467	100 µg
FoxH1	Human	Sheep IgG	AF4248	100 µg
Goosecoid	Human	Sheep IgG	AF4086	100 µg
HSP40/DNAJB1	Human/Mouse	Sheep IgG	AF4145	100 µg
ID-1a	Human/Mouse	Goat IgG	AF4377	100 µg
IGFBP-L1	Mouse	Goat IgG	AF4130	100 µg
IKKβ	Human	Sheep IgG	AF4535	100 µg
ILKAP/PP2Cδ	Human/Mouse/Rat	Sheep IgG	AF4554	100 µg
Integrin β6	Human	Sheep IgG	AF4155	100 µg
IRF3	Mouse	Goat IgG	AF4454	100 µg
IRF5	Human	Sheep IgG	AF4508	100 µg
Islet-2	Human	Sheep IgG	AF4244	100 µg
JunB	Human	Sheep IgG	AF4456	100 µg
LRIG1	Mouse	Goat IgG	AF3688	100 µg
mGluR5	Human	Sheep IgG	AF4514	100 µg
MLX	Human	Goat IgG	AF4186	100 µg

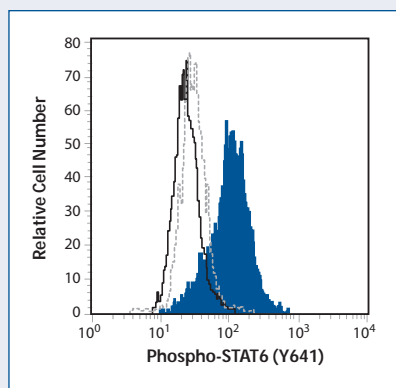
## Polyclonal Antibodies

Antibody	Species	Type	Catalog #	Size
MST2/STK3	Human/Mouse/Rat	Goat IgG	AF4549	100 µg
Neuropilin-1*	Human	Sheep IgG	AF3870	100 µg
Notch-1 Intracellular Domain	Human	Sheep IgG	AF3647	100 µg
NTAL	Human	Sheep IgG	AF4066	100 µg
Numb	Human	Sheep IgG	AF4338	100 µg
PAK6	Human/Mouse/Rat	Goat IgG	AF4265	100 µg
PBEF1	Human	Sheep IgG	AF4335	100 µg
PKA C (pan)	Human	Goat IgG	AF4175	100 µg
PKA C $\alpha$	Human/Mouse/Rat	Goat IgG	AF4268	100 µg
PKC $\theta$	Human/Mouse	Sheep IgG	AF4368	100 µg
PLK1	Human	Goat IgG	AF3804	100 µg
PML	Human/Mouse	Sheep IgG	AF3799	100 µg
RKIP	Human/Mouse/Rat	Goat IgG	AF4538	100 µg
RTVP-1	Mouse	Goat IgG	AF4468	100 µg
Serpin A12	Human	Sheep IgG	AF4410	100 µg
Serpin B6	Human	Sheep IgG	AF4336	100 µg
Sp3	Human	Goat IgG	AF4256	100 µg
TBX3	Human	Goat IgG	AF4509	100 µg
Wnt-2	Human	Goat IgG	AF3464	100 µg

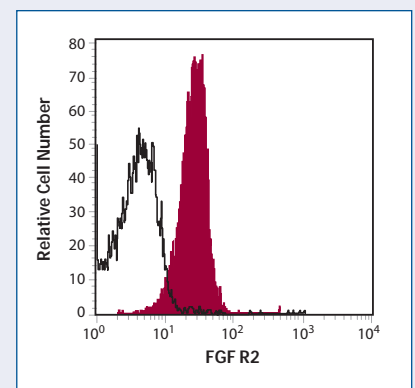
\* This product is covered under one or more patents owned by the Regents of the University of California.



**Detection of Patched in Embryonic Mouse Spinal Cord.** Patched was detected in ventral E13.5 mouse spinal cord using rat anti-mouse Patched monoclonal antibody (Catalog # MAB41051). Tissue was stained using a rhodamine-conjugated anti-rat IgG secondary antibody (red) and the cell nuclei counterstained with DAPI (blue).



**Detection of phospho-STAT6 (Y641) by Flow Cytometry.** Daudi human lymphoma cells were treated with interleukin-4 (blue histogram) or untreated (dotted histogram). Phospho-STAT6 was detected with phycoerythrin (PE)-conjugated rabbit anti-human STAT6 (Y641) polyclonal antibody (Catalog # IC3717P). Staining with an isotype control antibody (Catalog # IC105P, open histogram) indicates the specificity of the phospho-STAT6 antibody.



**Detection of FGF R2 by Flow Cytometry.** Human U937 monocytic cells were stained with allophycocyanin (APC)-conjugated anti-human FGF R2 (Catalog # FAB684A, filled histogram). Staining with an APC-conjugated isotype control antibody (Catalog # IC002A, open histogram) highlights the specificity of the FGF R2 antibody.

## Monoclonal Antibodies

Antibody	Species	Clone	Catalog #	Size
A33	Human	402104	MAB3080	100 µg
ADAM12	Human	421728	MAB4416	100 µg
ADAMTS4	Human	416610	MAB4307	500 µg
Akt3	Human	199822	MAB14631	100 µg
Aminopeptidase P2/XPNPEP2*	Human	391131	MAB24901	100 µg
Apolipoprotein E	Human	395004	MAB41441	100 µg
ATM	Human	245403	MAB2290	100 µg
BMI-1	Human	384515	MAB33341	50 µg
Calbindin D	Human	401025	MAB3320	100 µg
CaM Kinase IIδ	Human/Mouse/Rat	438422	MAB4176	100 µg
Carbonic Anhydrase XII	Mouse	336103	MAB2345	100 µg
Carboxypeptidase A2	Human	384014	MAB2896	500 µg
Carboxypeptidase A2	Human	384023	MAB28961	100 µg
CD5L	Mouse	375021	MAB28341	100 µg
CD14	Porcine	433423	MAB4597	100 µg
CDC14	Human/Mouse/Rat	472508	MAB4457	100 µg
CEACAM-6/CD66c	Human	439424	MAB3934	100 µg
Chondrolectin	Human	396305	MAB2576	100 µg
Chondromodulin-1	Human	394002	MAB41681	100 µg
CXCR7/RDC-1	Human	11G8	MAB42273	100 µg
DcR3/TNFRSF6B	Human	229817	MAB21351	500 µg
Decorin	Human	115424	MAB1432	500 µg
DPPII/QPP/DPP7	Human	398011	MAB3438	100 µg
DPPII/QPP/DPP7	Human	398024	MAB34381	100 µg
EphA1	Mouse	404515	MAB3034	100 µg
EphB4	Human	395810	MAB3038	100 µg
ESAM	Human	408522	MAB42041	100 µg
Fas/TNFRSF6	Feline	431014	MAB2267	100 µg
Fas/TNFRSF6	Feline	431006	MAB22671	100 µg
FCRL2/FcRH2	Human	296902	MAB2048	100 µg
Furin	Human	222712	MAB15032	500 µg
GLI-1	Human/Mouse	388516	MAB3324	100 µg
Granzyme B	Human	351927	MAB2906	100 µg
HGF R	Human	95106	MAB3582	100 µg
IgG <sub>1</sub> Fc	Human	97924	MAB110	500 µg
IkBα	Human	417208	MAB4299	50 µg
IkBε	Human	418515	MAB4300	100 µg
IL-1β/IL-1F2	Equine	424823	MAB3340	100 µg
IL-13 Rα1	Human	419718	MAB1462	100 µg
IL-17B R	Human	170216	MAB12071	500 µg
IL-17C	Mouse	311522	MAB23061	100 µg
IL-22	Human	142928	MAB7821	500 µg
INSL6	Human	421401	MAB4430	100 µg
Proinsulin	Human	253629	MAB13363	500 µg

\* U.S. Patent #6,399,349 used under license from Ryogen LLC

## Monoclonal Antibodies

Antibody	Species	Clone	Catalog #	Size
Lipocalin-2/NGAL	Human	220322	MAB17571	500 µg
Lysine Hydroxylase 2	Human	408105	MAB4445	100 µg
Matriptase/ST14	Human	416802	MAB3946	100 µg
Phospho-MBP (T98)	Human/Mouse/Rat/Bovine	399126	MAB4228	100 µg
MCP-11/Prss34	Mouse	451421	MAB2857	100 µg
Mesothelin/MPF	Human	420404	MAB32651	100 µg
mGluR7	Human	437310	MAB4405	100 µg
MMP-8	Rat	400102	MAB3245	100 µg
Neuropilin-1	Human	446921	MAB3870	100 µg
Neuropilin-1	Human	446915	MAB38701	100 µg
OX40/TNFRSF4	Human	443318	MAB3388	100 µg
Patched	Mouse	413220	MAB41051	100 µg
PLC-γ2	Human/Mouse	346404	MAB3716	100 µg
Plexin B1	Human	439512	MAB3749	100 µg
PTPN13/PTPL1	Human	359313	MAB3577	100 µg
PTPN14	Human	448701	MAB4458	100 µg
RAGE	Mouse	175409	MAB11792	500 µg
RBP4	Mouse	423617	MAB3476	100 µg
RelB	Human	315206	MAB2698	100 µg
RELMγ	Rat	395310	MAB2789	100 µg
Renin Propeptide	Human	411507	MAB4447	100 µg
Renin Propeptide	Mouse	434717	MAB4277	100 µg
SCD-1	Mouse	428208	MAB4404	100 µg
Semaphorin 3E	Human	400513	MAB32391	100 µg
Serpin A6	Mouse	433903	MAB4065	100 µg
Serpin E1/PAI-1	Mouse	367612	MAB3828	100 µg
Somatostatin R5/SSTR5	Human	394401	MAB4448	100 µg
Src	Human	327554	MAB3807	100 µg
SREC-I/SR-F1	Human	373606	MAB2409	100 µg
Synaptotagmin	Rat	ASV48	MAB4364	100 µg
Synaptotagmin	Rat	ASV30	MAB43641	100 µg
TFF3	Human	415909	MAB4407	100 µg
TFF3	Human	415921	MAB4408	100 µg
THOP1	Human	455710	MAB3439	100 µg
TRACP/PAP/ACP5	Human	417603	MAB3948	100 µg
TRAF-4	Human	433709	MAB3279	250 µg
Trypsin 1/PRSS1	Human	446628	MAB3848	100 µg
Trypsin 3/PRSS3	Human	420025	MAB3710	100 µg
Trypsin 3/PRSS3	Human	420012	MAB37101	100 µg
TSH β	Rat	442506	MAB4507	100 µg
VAP-1/AOC3	Human	393106	MAB39571	100 µg
vWF-A2 N-terminal	Human	210905	MAB27641	500 µg
XEDAR	Human	173103	MAB10931	500 µg

# Labeled Antibodies

## Fluorochrome-labeled Antibodies

Antibody	Species	Clone	Label	Catalog #	Size
B7-1/CD80	Mouse	RMMP-1	Fluorescein	22701-3	100 Tests
B7-1/CD80	Mouse	RMMP-1	Phycoerythrin	22702-3	100 Tests
Claudin-4	Human	382321	Allophycocyanin	FAB4219A	100 Tests
Claudin-4	Human	382321	Fluorescein	FAB4219F	100 Tests
Claudin-4	Human	382321	Phycoerythrin	FAB4219P	100 Tests
Dectin-1/CLEC7A	Human	259931	Allophycocyanin	FAB1859A	100 Tests
Dectin-1/CLEC7A	Human	259931	Phycoerythrin	FAB1859P	100 Tests
Dectin-1/CLEC7A	Mouse	218820	Allophycocyanin	FAB17561A	100 Tests
Dectin-1/CLEC7A	Mouse	218820	Phycoerythrin	FAB17561P	100 Tests
Phospho-EGF R (Y1068)	Human	338324	Fluorescein	IC3570F	100 Tests
Phospho-EGF R (Y1068)	Human	338324	Phycoerythrin	IC3570P	100 Tests
FGF R2	Human	98725	Allophycocyanin	FAB684A	100 Tests
FGF R2	Human	98725	Fluorescein	FAB684F	100 Tests
FGF R2	Human	98725	Phycoerythrin	FAB684P	100 Tests
FPR1	Human	350418	Allophycocyanin	FAB3744A	100 Tests
FPR1	Human	350418	Fluorescein	FAB3744F	100 Tests
FPR1	Human	350418	Phycoerythrin	FAB3744P	100 Tests
GLP-1R	Human	197920	Phycoerythrin	IC2814P	100 Tests
Granzyme A	Human	356412	Allophycocyanin	IC29051A	100 Tests
Granzyme A	Human	356412	Fluorescein	IC29051F	100 Tests
Granzyme A	Human	356412	Phycoerythrin	IC29051P	100 Tests
Granzyme B	Human	351927	Allophycocyanin	IC2906A	100 Tests
Granzyme B	Human	351927	Phycoerythrin	IC2906P	100 Tests
IFN- $\alpha$	Human	MMHA-11	Fluorescein	21112-3	50 Tests
IFN- $\alpha$	Mouse	RMMA-11	Fluorescein	22100-3	50 Tests
IFN- $\alpha/\beta$ R2	Human	MMHAR-2	Phycoerythrin	21385-3	50 Tests
IFN- $\alpha/\beta$ R2	Human	MMHAR-2	Fluorescein	21386-3	50 Tests
IFN- $\beta$	Human	MMHB-3	Fluorescein	21400-3	50 Tests
IFN- $\beta$	Mouse	RMMB-1	Fluorescein	22400-3	50 Tests
IL-1 RI	Mouse	129304	Phycoerythrin	FAB7712P	100 Tests
IL-17 RC	Mouse	Polyclonal	Fluorescein	FAB2270F	100 Tests
IL-17B R	Human	170220	Phycoerythrin	FAB1207P	100 Tests
KIR2DL4/CD158d	Human	181703	Allophycocyanin	FAB2238A	100 Tests
KIR2DL4/CD158d	Human	181703	Fluorescein	FAB2238F	100 Tests
KIR2DL4/CD158d	Human	181703	Phycoerythrin	FAB2238P	100 Tests
Langerin	Human	343828	Phycoerythrin	IC2088P	100 Tests
Leptin R	Human	52263	Allophycocyanin	FAB867A	100 Tests
Leptin R	Human	52263	Fluorescein	FAB867F	100 Tests
Leptin R	Human	52263	Phycoerythrin	FAB867P	100 Tests
LOX-1/SR-E1	Mouse	214012	Phycoerythrin	FAB1564P	100 Tests
MSP R/Ron	Human	99211	Allophycocyanin	FAB691A	100 Tests
MSP R/Ron	Human	99211	Fluorescein	FAB691F	100 Tests
MSP R/Ron	Human	99211	Phycoerythrin	FAB691P	100 Tests
Phospho-STAT6 (Y641)	Human	Polyclonal	Allophycocyanin	IC3717A	100 Tests

## Labeled Antibodies

### Fluorochrome-labeled Antibodies

Antibody	Species	Clone	Label	Catalog #	Size
Phospho-STAT6 (Y641)	Human	Polyclonal	Fluorescein	IC3717F	100 Tests
Phospho-STAT6 (Y641)	Human	Polyclonal	Phycoerythrin	IC3717P	100 Tests
Tie-1	Human	Polyclonal	Phycoerythrin	FAB619P	100 Tests
TSLP R	Mouse	Polyclonal	Fluorescein	FAB5461F	100 Tests
TSLP R	Mouse	Polyclonal	Phycoerythrin	FAB5461P	100 Tests

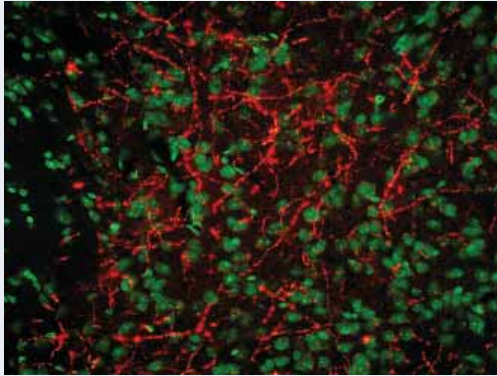
### Biotinylated Antibodies

Antibody	Species	Type	Catalog #	Size
BACE-2	Human	Sheep IgG	BAF4097	50 µg
BMP-9 Propeptide	Human	Goat IgG	BAF3879	50 µg
BMP-10 Propeptide	Human	Goat IgG	BAF3956	50 µg
CCL26-like/Eotaxin-3-like	Rat	Goat IgG	BAF3878	50 µg
CD31/PECAM-1	Mouse	Goat IgG	BAF3628	50 µg
CD34	Porcine	Goat IgG	BAF3890	50 µg
CD34	Rat	Goat IgG	BAF4117	50 µg
CEACAM-3/CD66d	Human	Sheep IgG	BAF4166	50 µg
CXCL8/IL-8	Canine	Mouse IgG <sub>1</sub>	BAM16082	100 µg
Decorin	Human	Mouse IgG <sub>1</sub>	BAM1431	100 µg
DMC/VCC-1	Mouse	Sheep IgG	BAF4270	50 µg
DPP10	Human	Sheep IgG	BAF4100	50 µg
FABP6	Human	Goat IgG	BAF3880	50 µg
Granulysin	Human	Goat IgG	BAF3138	50 µg
HepaCAM	Human	Sheep IgG	BAF4108	50 µg
Iduronate 2-Sulfatase/IDS	Human	Goat IgG	BAF2449	50 µg
IL-17B R	Human	Mouse IgG <sub>2b</sub>	BAM1207	50 µg
IL-22	Human	Mouse IgG <sub>1</sub>	BAM7821	100 µg
IL-33	Mouse	Goat IgG	BAF3626	50 µg
Integrin αV/CD51	Human	Goat IgG	BAF1219	50 µg
Kallikrein 13	Human	Goat IgG	BAF2625	50 µg
Kallikrein 15	Human	Goat IgG	BAF2540	50 µg
Latexin	Mouse	Sheep IgG	BAF3620	50 µg
LILRC2	Rat	Sheep IgG	BAF4239	50 µg
Matriptase/ST14	Human	Sheep IgG	BAF3946	50 µg
MUCDHL	Human	Goat IgG	BAF3826	50 µg
Plexin D1	Human	Goat IgG	BAF4160	50 µg
RGM-B	Mouse	Sheep IgG	BAF3597	50 µg
TRACP/PAP/ACP5	Human	Sheep IgG	BAF3948	50 µg
Wnt-2b	Mouse	Goat IgG	BAF3900	50 µg
XCR1	Human	Goat IgG	BAF857	50 µg

## Antibody Controls

Product	Catalog #	Size
Recombinant Mouse IgG <sub>2A</sub> Fc	4460-MG-100	100 µg

## NorthernLights™ Secondary Antibodies



Description	Conjugate	Catalog #	Size
Goat Anti-Rat IgG	NorthernLights-493	NL015	500 µL
Goat Anti-Rat IgG	NorthernLights-557	NL013	500 µL
Goat Anti-Rat IgG	NorthernLights-637	NL014	500 µL

**Detection of AgRP in Mouse Brain.** Agouti-related Protein (AgRP) expression was detected in a cryostat section of mouse brain using rat anti-mouse AgRP monoclonal antibody (Catalog # MAB634). The tissue was stained using the NorthernLights-637 anti-rat IgG secondary antibody (Catalog # NL014; red) and counterstained with FluoroNissl™ Green (green).

## Cell Culture Media & Supplements

Product	Species	Catalog #	Size
StemXVivo™ Serum-Free T Cell Base Media	Human	CCM010	250 mL

## Apoptosis & Cell Viability Detection Assays

Analyte	Species	Catalog #	Size
TACS™ XTT Cell Proliferation/Viability Assay	Multi-species	4891-025-K	2500 Tests
Calcein AM Cell Viability Assay	Multi-species	4892-010-K	1000 Tests

## Cultrex® Basement Membrane Extracts

Product	Catalog #	Size
Cultrex PathClear™ BME Growth Factor Reduced - Phenol Red	3431-005-02	5 mL
Cultrex PathClear™ BME Growth Factor Reduced - Phenol Red (2 x 5 mL)	3431-010-02	10 mL
Cultrex PathClear™ BME Growth Factor Reduced	3433-005-02	5 mL
Cultrex PathClear™ BME Growth Factor Reduced (2 x 5 mL)	3433-010-02	10 mL

## DNA Damage & Repair Enzymes

Product	Catalog #	Size
TdT Enzyme/Buffer	9510-01K-EB	1000 U

## Primer Pairs

Product	Species	Catalog #	Size
TP63/TP73L	Human	RDP-329-025	25 Tests

## ELISA & Activity Assay Development Kits

### DuoSet® ELISA Development Systems

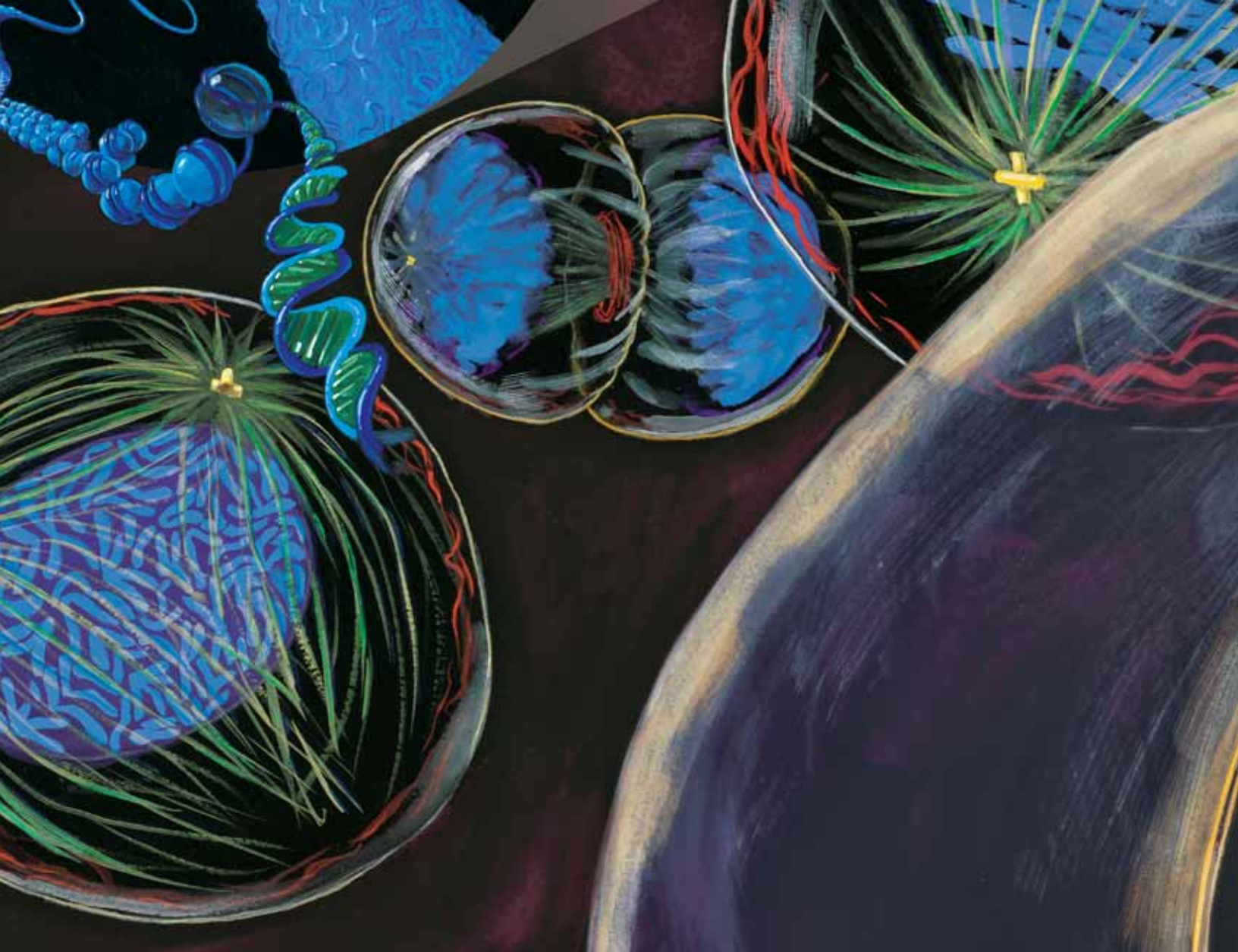
Analyte	Species	Catalog #	*Reagents for
Angiopoietin-3	Mouse	DY738	15 Plates
βIG-H3	Human	DY2935	15 Plates
CCL28	Mouse	DY533	15 Plates
CEACAM-1/CD66a	Human	DY2244	15 Plates
Dkk-4	Human	DY1269	15 Plates
ErbB2/Her2 Extracellular Domain	Human	DY1129	15 Plates
GITR Ligand/TNFSF18	Mouse	DY2177	15 Plates
Granzyme B	Mouse	DY1865	15 Plates
HGF R Extracellular Domain	Human	DY358	15 Plates
HVEM/TNFRSF14	Human	DY356	15 Plates
IL-1ra/IL-1F3	Mouse	DY480	15 Plates
IL-2	Feline	DY1890	15 Plates
IL-10	Canine	DY735	15 Plates
IL-20	Human	DY1102	15 Plates
Kallikrein 3/PSA	Human	DY1344	15 Plates
Nidogen-1/Entactin	Human	DY2570	15 Plates
OSF-2/Periostin	Mouse	DY2955	15 Plates
RAGE	Mouse	DY1179	15 Plates
RANK/TNFRSF11A	Human	DY683	15 Plates
Soggy-1	Mouse	DY1508	15 Plates
TIM-1/KIM-1/HAVCR	Human	DY1750	15 Plates
TNF-α/TNFSF1A	Feline	DY2586	15 Plates

\*Also available in 45 plate Economy Packs.

### DuoSet IC (Intracellular) ELISAs & Activity Assays

Analyte	Species	Catalog #	*Reagents for
Phospho-AMPK α1 (T174)	Human	DYC3528-2	2 Plates
Total EphB4	Human	DYC3038-2	2 Plates
Phospho-EphB4	Human	DYC4057-2	2 Plates
Total M-CSF R	Human	DYC329-2	2 Plates
Phospho-Prolactin R	Human	DYC4058-2	2 Plates
Total TrkA	Human	DYC175-2	2 Plates

\*Also available in 5 plate packs and 15 plate Economy Packs.



## Tools for Cell Biology Research™



**R&D Systems, Inc.**  
614 McKinley Place N.E.  
Minneapolis, MN 55413  
Tel: (800) 343-7475  
(612) 379-2956  
Fax: (612) 656-4400  
[www.RnDSystems.com](http://www.RnDSystems.com)



Printed on recyclable  
paper 10% post  
consumer waste.

R&D Systems is a registered trademark of TECHNE Corporation.  
Quantikine is a registered trademark of R&D Systems, Inc.  
NorthernLights and StemXVivo are trademarks of R&D Systems, Inc.

Cultrex is a registered trademark of Trevigen, Inc. TACS and PathClear are trademarks of Trevigen, Inc.  
FluoroNissl is a trademark of Molecular Probes, Inc.

PRESORTED  
BOUND PRINTED  
MATTER  
U.S. POSTAGE  
PAID  
RR Donnelley