

Anti-mouse CMG-2 Antibody

ORDERING INFORMATION

Catalog Number: AF3636

Lot Number: XRY01

Size: 100 µg

Formulation: 0.2 µm filtered solution in PBS with 5% trehalose

Storage: -20° C

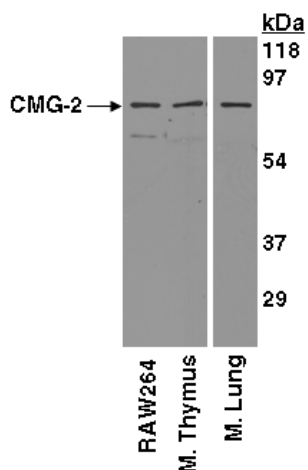
Reconstitution: sterile PBS

Specificity: mouse CMG-2 extracellular domain

Immunogen: NS0-derived rmCMG-2 extracellular domain

Ig Type: goat IgG

Applications: Western blot
Direct ELISA



Detection of CMG-2 with AF3636.

Cell and tissue lysates were resolved by SDS-PAGE, transferred to an Immobilon-P membrane and immunoblotted with 1.0 µg/mL goat anti-mCMG-2.

Preparation

Produced in goats immunized with purified, NS0-derived, recombinant mouse Capillary Morphogenesis Gene 2 extracellular domain (rmCMG-2; aa 26 - 318; Accession # Q6DFX2). Mouse CMG-2 specific IgG was purified by mouse CMG-2 affinity chromatography. CMG-2, also known as anthrax toxin receptor 2 (ANTXR2) is a type I membrane protein with a von Willebrand factor A/integrin-like inserted domain in its extracellular region. CMG-2 binds laminin and collagen type IV. It also interacts with the protective antigen (PA) subunit of anthrax toxin. In the region used as immunogen, the amino acid sequence of mouse CMG-2 shares 84% and 89% identity with that of human and rat CMG-2, respectively.

Formulation

Lyophilized from a 0.2 µm filtered solution in phosphate-buffered saline (PBS) with 5% trehalose.

Reconstitution

Reconstitute with sterile PBS. If 0.5 mL of PBS is used, the antibody concentration will be 0.2 mg/mL.

Storage

Lyophilized samples are stable for twelve months from date of receipt when stored at -20° C to -70° C. Upon reconstitution, the antibody can be stored at 2° - 8° C for 1 month without detectable loss of activity. Reconstituted antibody can also be aliquotted and stored frozen at -20° C to -70° C in a **manual defrost freezer** for six months without detectable loss of activity. **Avoid repeated freeze-thaw cycles.**

Specificity

This antibody has been selected for its ability to recognize mouse CMG-2 in direct ELISAs and Western blots. In direct ELISAs, this antibody shows approximately 10% cross-reactivity with rhCMG-2.

Applications

Western blot - An antibody concentration of 1.0 µg/mL is recommended.

Direct ELISA - This antibody can be used at 0.5 - 1.0 µg/mL with the appropriate secondary reagents to detect mouse CMG-2. The detection limit for rmCMG-2 is approximately 1.5 ng/well.

Optimal dilutions should be determined by each laboratory for each application.