

ORDERING INFORMATION

Catalog Number: AF3757

Lot Number: YFC01

Size: 100 µg

Formulation: 0.2 µm filtered solution in PBS with 5% trehalose

Storage: -20° C

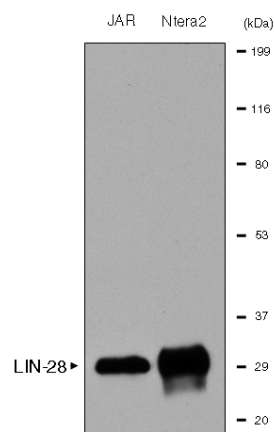
Reconstitution: sterile PBS

Specificity: human LIN-28

Immunogen: *E. coli*-derived rhLIN-28

Ig Type: goat IgG

Applications: Western blot
Immunocytochemistry
Direct ELISA



Detection of LIN-28 with AF3757.

30 µg of whole cell extracts from exponentially growing human JAR and mouse Ntera2 cells were prepared, resolved by SDS-PAGE, and transferred to a PVDF membrane. The membrane was immunoblotted with 0.1 µg/mL goat anti-LIN-28 antibody.

Preparation

Produced in goats immunized with purified, *E. coli*-derived, recombinant human LIN-28 (rhLIN-28; aa 1 - 209; Accession # Q9H9Z2). Human LIN-28 specific IgG was purified by human LIN-28 affinity chromatography. Human LIN-28 is a 30 kDa (209 aa) cytoplasmic RNA-binding protein with an N-terminal cold shock domain and two C-terminal CCHC zinc finger domains. It is expressed by various undifferentiated embryonic cell types and is also present in adult cardiac and skeletal muscle. Expression of LIN-28 has been shown to be regulated by micro-RNA. Human LIN-28 shares 98% and 97% amino acid sequence homology with rat and mouse LIN-28, respectively.

Formulation

Lyophilized from a 0.2 µm filtered solution in phosphate-buffered saline (PBS) with 5% trehalose.

Reconstitution

Reconstitute with sterile PBS. If 0.5 mL of PBS is used, the antibody concentration will be 0.2 mg/mL.

Storage

Lyophilized samples are stable for twelve months from date of receipt when stored at -20° C to -70° C. Upon reconstitution, the antibody can be stored at 2° - 8° C for 1 month without detectable loss of activity. Reconstituted antibody can also be aliquotted and stored frozen at -20° C to -70° C in a manual defrost freezer for six months without detectable loss of activity. **Avoid repeated freeze-thaw cycles.**

Specificity

This antibody has been selected for its ability to recognize human LIN-28 in direct ELISAs and Western blots.

Applications

Western blot - This antibody can be used at 0.1 - 0.2 µg/mL with the appropriate secondary reagents to detect human LIN-28. The detection limit for rhLIN-28 is approximately 5 ng/lane under non-reducing and reducing conditions.

Immunocytochemistry - This antibody has been used at a concentration of 10 µg/mL to detect human LIN-28 in NTERA-2 cells. Cells were fixed with PBS containing 4% paraformaldehyde for 20 minutes at room temperature and blocked with PBS containing 10% normal donkey serum, 0.1% Triton® X-100, and 1% BSA for 45 minutes at room temperature. After blocking, cells were incubated with diluted primary antibody overnight at 4° C followed by fluorochrome-coupled anti-goat IgG at room temperature in the dark for one hour. Between each step, cells were washed with PBS containing 0.1% BSA.

Direct ELISA - This antibody can be used at 0.5 - 1.0 µg/mL with the appropriate secondary reagents to detect human LIN-28. The detection limit for rhLIN-28 is approximately 1.3 ng/well.

Optimal dilutions should be determined by each laboratory for each application.

FOR RESEARCH USE ONLY. NOT FOR USE IN HUMANS.

R&D Systems, Inc.
1-800-343-7475