



Anti-human Aminopeptidase N/ANPEP Antibody

ORDERING INFORMATION

Catalog Number: AF3815

Lot Number: CASO01

Size: 100 µg

Formulation: 0.2 µm filtered solution in PBS with 5% trehalose

Storage: -20° C

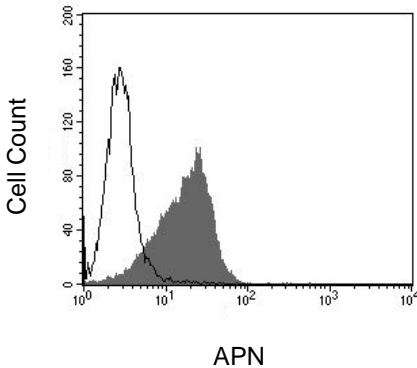
Reconstitution: sterile PBS

Specificity: human APN

Immunogen: NS0-derived rhAPN (aa 69 - 967)

Ig Type: sheep IgG

Applications: Western blot
Immunoprecipitation
Flow cytometry
Direct ELISA



U937 cells were stained with anti-APN (R&D Systems, Cat. # AF3815, filled histogram), or control antibody (R&D Systems, Cat. # 5-001-A, open histogram) followed by NL557-conjugated donkey anti-sheep IgG (R&D Systems, Cat. # NL010).

Preparation

Produced in sheep immunized with purified, NS0-derived, recombinant human Aminopeptidase N (rhAPN; R&D Systems, Catalog # 3815-ZN). Human APN specific IgG was purified by human APN affinity chromatography.

Formulation

Lyophilized from a 0.2 µm filtered solution in phosphate-buffered saline (PBS) with 5% trehalose.

Reconstitution

Reconstitute with sterile PBS. If 0.5 mL of PBS is used, the antibody concentration will be 0.2 mg/mL.

Storage

Lyophilized samples are stable for twelve months from date of receipt when stored at -20° C to -70° C. Upon reconstitution, the antibody can be stored at 2° - 8° C for 1 month without detectable loss of activity. Reconstituted antibody can also be aliquotted and stored frozen at -20° C to -70° C in a **manual defrost freezer** for six months without detectable loss of activity. **Avoid repeated freeze-thaw cycles.**

Specificity

This antibody has been selected for its ability to recognize human APN in the applications listed below. In direct ELISAs and Western blots, this antibody shows approximately 20% cross-reactivity with rmAPN.

Applications

Western blot - This antibody can be used at 0.1 - 0.2 µg/mL with the appropriate secondary reagents to detect human APN. The detection limit for rhAPN is approximately 5 ng/lane under non-reducing and reducing conditions.

Immunoprecipitation - This antibody has been used to immunoprecipitate rhAPN from conditioned media of transfected NS0 cells.

Flow cytometry - This antibody was tested for flow cytometry using U937 cells. Dilute this antibody to 25 µg/mL and add 10 µL of the diluted solution to 1 - 2.5 x 10⁵ cells in a total reaction volume not exceeding 200 µL. The binding of unlabeled antibodies may be visualized by adding a secondary developing reagent such as anti-sheep IgG conjugated to a fluorochrome.

Direct ELISA - This antibody can be used at 0.5 - 1.0 µg/mL with the appropriate secondary reagents to detect human APN. The detection limit for rhAPN is approximately 0.3 ng/well.

Optimal dilutions should be determined by each laboratory for each application.

FOR RESEARCH USE ONLY. NOT FOR USE IN HUMANS.

R&D Systems, Inc.
1-800-343-7475

2/29/08