



Anti-mouse ECM-1 Antibody

ORDERING INFORMATION

Catalog Number: AF4428

Lot Number: ZYH01

Size: 100 µg

Formulation: 0.2 µm filtered solution in PBS with 5% trehalose

Storage: -20° C

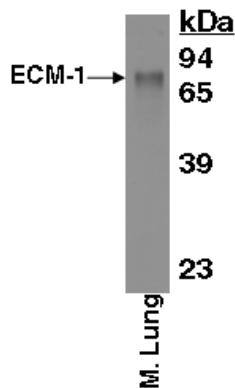
Reconstitution: sterile PBS

Specificity: mouse ECM-1

Immunogen: NS0-derived rmECM-1

Ig Type: goat IgG

Applications: Western blot
Direct ELISA



Detection of ECM-1 with AF4428.

Tissue lysates were resolved by SDS-PAGE, transferred to an Immobilon-P membrane and immunoblotted with 1.0 µg/mL goat anti-mECM-1.

Background

ECM-1 (extracellular matrix protein 1) is a secreted, 85 kDa ECM glycoprotein which structurally resembles members of the serum albumin protein family. It participates in endochondrial bone formation through regulation of alkaline phosphatase and is known to bind to fibulin 1. Mature mouse ECM-1 is 540 amino acids (aa) in length. It contains four domains; a 150 aa cysteine-free region, two tandem repeats of 125 aa and a C-terminal Cys-rich domain. One splice form exists that shows a 125 aa deletion between aa 256 - 380. Mature mouse ECM-1 shares 67% and 90% aa identity with human and rat ECM-1, respectively.

Preparation

Produced in goats immunized with purified, NS0-derived recombinant mouse ECM-1 (rmECM-1; aa 20 - 559; Accession # EDL38832). Mouse ECM-1 specific IgG was purified by mouse ECM-1 affinity chromatography.

Formulation

Lyophilized from a 0.2 µm filtered solution in phosphate-buffered saline (PBS) with 5% trehalose.

Reconstitution

Reconstitute with sterile PBS. If 0.5 mL of PBS is used, the antibody concentration will be 0.2 mg/mL.

Storage

Lyophilized samples are stable for twelve months from date of receipt when stored at -20° C to -70° C. Upon reconstitution, the antibody can be stored at 2° - 8° C for 1 month without detectable loss of activity. Reconstituted antibody can also be aliquotted and stored frozen at -20° C to -70° C **in a manual defrost freezer** for six months without detectable loss of activity. **Avoid repeated freeze-thaw cycles.**

Specificity

This antibody has been selected for its ability to recognize mouse ECM-1 in direct ELISAs and Western blots. In these formats, this antibody shows approximately 10% cross-reactivity with rhECM-1.

Applications

Western blot - An antibody concentration of 1.0 µg/mL is recommended.

Direct ELISA - This antibody can be used at 0.5 - 1.0 µg/mL with the appropriate secondary reagents to detect mouse ECM-1. The detection limit for rmECM-1 is approximately 0.3 ng/well.

Optimal dilutions should be determined by each laboratory for each application.