

DESCRIPTION

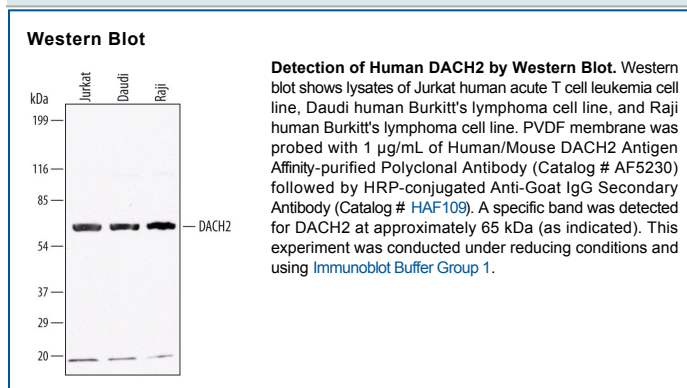
Species Reactivity	Human/Mouse
Specificity	Detects endogenous human and mouse DACH2 in Western blots.
Source	Polyclonal Goat IgG
Purification	Antigen Affinity-purified
Immunogen	<i>E. coli</i> -derived recombinant human DACH2 Gln419-Gln583 Accession # Q96NX9
Formulation	Lyophilized from a 0.2 µm filtered solution in PBS with Trehalose. See Certificate of Analysis for details.

APPLICATIONS

Please Note: Optimal dilutions should be determined by each laboratory for each application. *General Protocols* are available in the *Technical Information* section on our website.

	Recommended Concentration	Sample
Western Blot	1 µg/mL	See Below

DATA



PREPARATION AND STORAGE

Reconstitution	Reconstitute at 0.2 mg/mL in sterile PBS.
Shipping	The product is shipped at ambient temperature. Upon receipt, store it immediately at the temperature recommended below.
Stability & Storage	Use a manual defrost freezer and avoid repeated freeze-thaw cycles. <ul style="list-style-type: none"> ● 12 months from date of receipt, -20 to -70 °C as supplied. ● 1 month from date of receipt, 2 to 8 °C, reconstituted. ● 6 months from date of receipt, -20 to -70 °C, reconstituted.

BACKGROUND

DACH2 (Dachshund 2) is a 65 kDa (predicted) member of the DACH family of transcription factors. It is expressed in the dermomyotome and Mullerian duct, and promotes Mullerian duct formation and myogenin gene suppression. Human DACH2 is 599 amino acids (aa) in length and contains a DD1 domain in the N-terminus (aa 66-162) that mediates DNA binding, and a C-terminal, coiled-coil DD2 domain (aa 452-543) that interacts with EYA proteins. Multiple splice variants of DACH2 are known. There is an alternate start site at Met220 that may be accompanied by both a deletion of aa 259-311 and a three aa substitution for aa 585-599. In addition, there is a deletion of aa 163-175 that may be accompanied by an Ala substitution for aa 584-599. Finally, there is a 41 aa substitution for aa 1-175. Over aa 419-583, human DACH2 is 93% aa identical to mouse DACH2.