



Anti-human APBA3 Antibody

ORDERING INFORMATION

Catalog Number: AF5689

Lot Number: CCYP01

Size: 100 µg

Formulation: 0.2 µm filtered solution in PBS with 5% trehalose

Storage: -20° C

Reconstitution: sterile PBS

Specificity: human APBA3

Immunogen: *E. coli*-derived rhAPBA3 (aa 1 - 138)

Ig Type: sheep IgG

Applications: Western blot
Direct ELISA

Background

X11-γ (Adaptor protein X11 gamma; also APBA3, Mint3 and X11L2) is a member of the X11 family of adaptor proteins. Unlike X11-α and -β which are generally neuronal proteins, X11-γ is widely expressed in all tissues. X11-γ has many functions, including MT-MMP and Furin intracellular trafficking and APP binding. Human X11-γ is 575 amino acids (aa) in length. It contains a poly-Ser segment (aa 165 - 171), a PID region (aa 217 - 381) that binds β-amyloid precursor, and two PDZ domains (aa 393 - 478 and 485 - 560) that bind Arf GTPases. There is one potential splice variant that shows a 34 aa insertion after Ile505. Over aa 1 - 138, human X11-γ shares 62% aa identity with mouse X11-γ.

Preparation

Produced in sheep immunized with purified, *E. coli*-derived, recombinant human APBA3 (rhAPBA3; aa 1 - 138; Accession # O96018). Human APBA3 specific IgG was purified by human APBA3 affinity chromatography.

Formulation

Lyophilized from a 0.2 µm filtered solution in phosphate-buffered saline (PBS) with 5% trehalose.

Reconstitution

Reconstitute with sterile PBS. If 0.5 mL of PBS is used, the antibody concentration will be 0.2 mg/mL.

Storage

Lyophilized samples are stable for twelve months from date of receipt when stored at -20° C to -70° C. Upon reconstitution, the antibody can be stored at 2° - 8° C for 1 month without detectable loss of activity. Reconstituted antibody can also be aliquotted and stored frozen at -20° C to -70° C in a **manual defrost freezer** for six months without detectable loss of activity. **Avoid repeated freeze-thaw cycles.**

Specificity

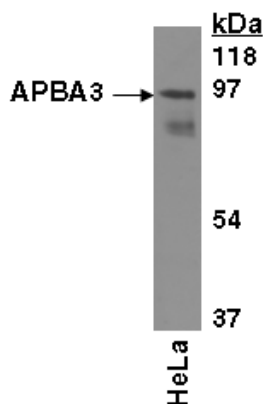
This antibody has been selected for its ability to recognize human APBA3 in direct ELISAs and Western blots. In direct ELISAs, this antibody shows less than 1% cross-reactivity with rhX11-α and rhX11-β.

Applications

Western blot - An antibody concentration of 1.0 µg/mL is recommended.

Direct ELISA - This antibody can be used at 0.5 - 1.0 µg/mL with the appropriate secondary reagents to detect human APBA3. The detection limit for rhAPBA3 is approximately 0.2 ng/well.

Optimal dilutions should be determined by each laboratory for each application.



Detection of APBA3 with AF5689.

Cell lysates were resolved by SDS-PAGE, transferred to an Immobilon-P membrane and immunoblotted with 1.0 µg/mL sheep anti-hAPBA3.