

DESCRIPTION

Species Reactivity	Human/Mouse
Specificity	Detects human and mouse Bax.
Source	Polyclonal Rabbit IgG
Purification	Antigen Affinity-purified
Immunogen	KLH-coupled human Bax synthetic peptide GPTSSEQIMKTGALLQGFIQDC
Formulation	Lyophilized from a 0.2 µm filtered solution in PBS with Trehalose. See Certificate of Analysis for details.

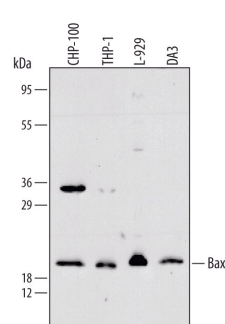
APPLICATIONS

Please Note: Optimal dilutions should be determined by each laboratory for each application. *General Protocols* are available in the *Technical Information* section on our website.

	Recommended Concentration	Sample
Western Blot	0.3 µg/mL	See Below
Immunohistochemistry	5-15 µg/mL	See Below

DATA

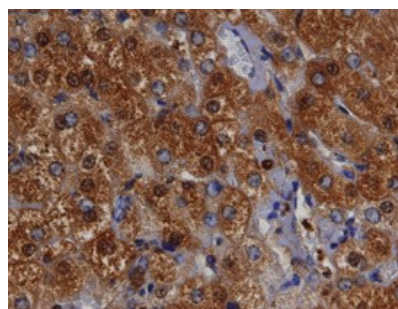
Western Blot



Detection of Human/Mouse Bax by Western Blot.

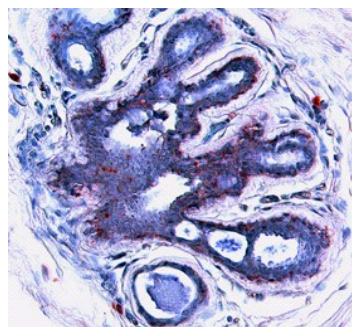
Western blot shows lysates of CHP-100 human neuroblastoma cell line, THP-1 human acute monocytic leukemia cell line, L-929 mouse fibroblast cell line, and DA3 mouse myeloma cell line. PVDF membrane was probed with 0.3 µg/mL of Rabbit Anti-Human/Mouse Bax Antigen Affinity-purified Polyclonal Antibody (Catalog # AF820) followed by HRP-conjugated Anti-Rabbit IgG Secondary Antibody (Catalog # HAF008). A specific band was detected for Bax at approximately 21 kDa (as indicated). This experiment was conducted under reducing conditions and using [Immunoblot Buffer Group 2](#).

Immunohistochemistry



Bax in Human Liver. Bax was detected in immersion fixed paraffin-embedded sections of human liver using 10 µg/mL Rabbit Anti-Human/Mouse Bax Antigen Affinity-purified Polyclonal Antibody (Catalog # AF820) overnight at 4 °C. Tissue was stained with the Anti-Rabbit HRP-DAB Cell & Tissue Staining Kit (brown; Catalog # CTS005) and counterstained with hematoxylin (blue). View our protocol for [Chromogenic IHC Staining of Paraffin-embedded Tissue Sections](#).

Immunohistochemistry



Bax in Human Breast. Bax was detected in immersion fixed paraffin-embedded sections of human breast using 15 µg/mL Rabbit Anti-Human/Mouse Bax Antigen Affinity-purified Polyclonal Antibody (Catalog # AF820) overnight at 4 °C. Tissue was stained (red) and counterstained with hematoxylin (blue). View our protocol for [Chromogenic IHC Staining of Paraffin-embedded Tissue Sections](#).

PREPARATION AND STORAGE

Reconstitution	Reconstitute at 0.2 mg/mL in sterile PBS.
Shipping	The product is shipped at ambient temperature. Upon receipt, store it immediately at the temperature recommended below.
Stability & Storage	<p>Use a manual defrost freezer and avoid repeated freeze-thaw cycles.</p> <ul style="list-style-type: none"> ● 12 months from date of receipt, -20 to -70 °C as supplied. ● 1 month, 2 to 8 °C under sterile conditions after reconstitution. ● 6 months, -20 to -70 °C under sterile conditions after reconstitution.

BACKGROUND

The sequence used for immunization differs significantly from the sequences of the corresponding region of other members of the Bcl-2 family.