

Human Pluripotent Stem Cell Assessment Primer Pair Panel

Catalog Number SC012

Reagents for the identification of human stem cell differentiation states.

This package insert must be read in its entirety before using this product.

**FOR LABORATORY RESEARCH USE ONLY. NOT FOR DIAGNOSTIC USE.
THE SAFETY AND EFFICACY OF THIS PRODUCT IN DIAGNOSTIC
OR OTHER CLINICAL USES HAS NOT BEEN ESTABLISHED.**

TABLE OF CONTENTS

Contents	Page
INTRODUCTION	2
MATERIALS PROVIDED.....	2
ADDITIONAL SUPPLIES REQUIRED	3
STORAGE.....	3
LIMITATIONS OF THE PROCEDURE	4
SPECIFICITY.....	4
RECOMMENDED PROTOCOLS	5
<i>I. DNase Treatment</i>	5
<i>II. Reverse Transcription Reaction</i>	5
<i>III. PCR Reaction</i>	6
TECHNICAL HINTS	7
ANALYSIS OF RESULTS.....	7
APPENDIX OF PCR PRODUCTS	8
APPENDIX OF RELATED PRODUCTS.....	9
TROUBLESHOOTING GUIDE	10
REFERENCES.....	10

MANUFACTURED AND DISTRIBUTED BY:

R&D Systems, Inc.	TELEPHONE:	(800) 343-7475
614 McKinley Place NE		(612) 379-2956
Minneapolis, MN 55413	FAX:	(612) 656-4400
United States of America	E-MAIL:	info@RnDSystems.com

DISTRIBUTED BY:

R&D Systems Europe, Ltd.	TELEPHONE:	+44 (0)1235 529449
19 Barton Lane	FAX:	+44 (0)1235 533420
Abingdon Science Park	E-MAIL:	info@RnDSystems.co.uk
Abingdon, OX14 3NB		
United Kingdom		

R&D Systems GmbH	TELEPHONE:	+49 (0)6122 90980
Borsigstrasse 7	FAX:	+49 (0)6122 909819
65205 Wiesbaden-Nordenstadt	E-MAIL:	infogmbh@RnDSystems.co.uk
Germany		

R&D Systems Europe	FREEPHONE:	+0800 90 72 49
77 boulevard Vauban	FAX:	+0800 77 16 68
59041 LILLE CEDEX	E-MAIL:	info@RnDSystems.co.uk
France		

INTRODUCTION

Embryonic stem (ES) cells, derived from the inner cell mass of pre-implantation embryos, have been recognized as the most pluripotent stem cell population (1, 2). Human ES cells can be maintained and propagated for extended periods in media containing fibroblast growth factor basic (FGF basic) (3). Differentiation of ES cells to a lineage-committed fate is typically monitored by characterization of its phenotypic properties. More recently, molecular markers for ES cell differentiation have been identified by a variety of techniques including comparison with databases, reverse transcription-polymerase chain reaction (RT-PCR*), focused cDNA microarrays, and immunocytochemistry. The identification of a common set of expressed genes contributing to the core properties of ES cells, or their “stemness” phenotype has been established (3 - 11).

MATERIALS PROVIDED

The Human Pluripotent Stem Cell Assessment Primer Pair Panel profiles the mRNA transcripts of fourteen genes that are frequently used as markers for molecular characterization of undifferentiated and lineage-committed human ES cells (Table 1). A primer pair for human GAPDH is included and can be used as a control for successful cDNA synthesis. A positive control is also included. See Table 2 in the appendix.

Table 1: *Expected gene expression patterns detected by this panel.*

Undifferentiated ES Cells	Ectodermal Lineage	Endodermal Lineage	Mesodermal Lineage	Germ Cells
DPPA5/ESG1	Nestin	AFP	Brachyury	Stella
Nanog	Otx2	GATA-4	—	—
Oct3/4	TP63	PDX-1	—	—
SOX2	SOX2	SOX17	—	—
—	—	HNF-3 β	—	—

Primer Pairs - Each vial contains 375 pmoles of lyophilized primer. See Table 2 in the appendix for details about the primer pairs provided in this kit.

Positive Control 57 - One vial containing 1500 ng of lyophilized synthetic double-stranded DNA. The Positive Control is not intended for quantitative purposes.

*PCR is covered by US Patent Nos. 4683195 and 4683202 assigned to Hoffmann-La Roche.

ADDITIONAL SUPPLIES REQUIRED

Reagents

- RNase-free DNase (DNase I from Ambion or equivalent)
- Random Primers (R&D Systems, Catalog # RDPC2) or Oligo (dT)₁₂₋₁₈ primers (R&D Systems, Catalog # RDPC1)
- RNase H⁻ Reverse Transcriptase (Superscript II from Invitrogen or equivalent)
- Taq DNA Polymerase (Taq 2000 from Stratagene or equivalent)
- Agarose (Seakem ME agarose from Cambrex or equivalent)
- Reverse Transcription Buffer (Invitrogen or equivalent)
- 10X Taq buffer (Stratagene or equivalent)
- 2 mM dNTPs (Amersham or equivalent)
- 10 mM dNTPs (Invitrogen or equivalent)
- 0.1 M DTT (Invitrogen or equivalent)
- Autoclaved deionized water (dH₂O)
- Nuclease-free dH₂O
- Gel loading dye
- DNA markers
- Mineral oil
- 0.1X TE
- 1X TAE

Equipment

- Thermal cycler (Stratagene Robocycler or equivalent)
- Hot block or water bath at 70° C
- Hot block or water bath at 42° C
- Thin walled PCR tubes
- 1.5 mL sterile tubes
- Power supply

Disposables

- Pipettes and aerosol barrier pipette tips
- Gloves

STORAGE

The reconstituted primer pairs are stable for up to one year at ≤ -20° C* in a manual defrost freezer. Aliquot in single use portions. Avoid repeated freeze-thaw cycles.

*Provided this is within the expiration date on the kit label.

LIMITATIONS OF THE PROCEDURE

- **FOR LABORATORY RESEARCH USE ONLY. NOT FOR USE IN DIAGNOSTIC PROCEDURES.**
- The safety and efficacy of this product in diagnostic or other clinical uses has not been established.
- The kit should not be used beyond the expiration date on the kit label.
- The quality of the cells and any variations in the procedure can cause variation in results.

SPECIFICITY

Twelve of the fourteen embryonic stem cell primer pairs are specific for human cDNA. All primer pairs were also tested with mouse and rat cDNA. The SOX17 and Brachyury primer pairs are not optimized for use with mouse or rat cDNA since they very weakly amplify mouse and rat cDNA, respectively. All embryonic stem cell primer pairs were tested with mouse embryonic fibroblast (MEF) cDNA and did not amplify a product.

RECOMMENDED PROTOCOLS

I. DNase Treatment

Treatment of total RNA with RNase-free DNase is required to remove contaminating genomic DNA. Follow the procedure according to the manufacturer's instructions. If DNase treatment of RNA is not done, false positives may result.

II. Reverse Transcription Reaction

1. Thaw all reagents completely on ice. All reactions should be assembled on ice.
2. Pipette the following into a nuclease-free tube:
 - 1 - 5 μg of DNase treated total RNA (up to 11 μL)
 - 1 μL of random primers (300 ng/ μL) or Oligo (dT)₁₂₋₁₈ primers (0.5 $\mu\text{g}/\mu\text{L}$)
 - X μL of nuclease-free dH₂O for a final volume of 12 μL
3. Mix and incubate at 70° C for 10 minutes. Place tube on ice immediately.
4. Briefly centrifuge the tube, and add the following to each tube:
 - 4 μL of 5X Reverse Transcription Buffer
 - 2 μL of 0.1 M DTT
 - 1 μL of 10 mM dNTPs
5. Mix and incubate at room temperature for 10 minutes.
6. Incubate at 42° C for 2 minutes.
7. Add 1 μL RNase H⁻ Reverse Transcriptase (200 units/ μL). Mix by pipetting.
8. Incubate at 42° C for 50 minutes.
9. Incubate at 70° C for 15 minutes.
10. Dilute reactions 5-fold by adding 80 μL of nuclease-free dH₂O.
11. Assay immediately or store the cDNA samples at $\leq -20^\circ\text{C}$ in a manual defrost freezer.

III. PCR Reaction

1. Resuspend each Primer Pair in 50 μL of autoclaved deionized water or 0.1X TE Buffer (1 mM Tris HCl, 0.1 mM EDTA, pH 8.0 at 25° C) for a final concentration of 7.5 pmoles/ μL each primer (do not resuspend the Positive Control at this time).
2. Determine the number of PCR reactions (see Technical Hints for setting up a PCR master mix). Multiply the volumes listed below for each reagent by the number of reactions. Prepare a separate master mix for each primer pair.

36.5 μL autoclaved deionized water

5 μL 10X Taq buffer (with 15 mM MgCl_2)

5 μL 10X dNTP mix (10X = 2 mM each dNTP)

2 μL Primers (7.5 pmoles/ μL each primer)

0.5 μL Taq DNA Polymerase (5 units/ μL)

3. Prepare the Negative Control reaction tube:
 - a. Pipette 1 μL of autoclaved deionized water into a pre-labeled negative control tube.
 - b. Add 49 μL of the master mix prepared above.
 - c. Briefly spin tube and add 30 μL of mineral oil to prevent evaporation.
 - d. Close the reaction tube and place on ice.
4. Prepare the cDNA sample reaction tube(s):
 - a. Pipette 1 μL of cDNA sample into a pre-labeled PCR reaction tube.
 - b. Add 49 μL of the master mix prepared above.
 - c. Briefly spin tube and add 30 μL of mineral oil to prevent evaporation.
 - d. Close the reaction tube and place on ice.
5. Resuspend Positive Control 57 in 150 μL of autoclaved deionized water or 0.1X TE Buffer. Centrifuge the Positive Control tube briefly. This should be done in a separate location from where PCR reactions are set up. Use different pipettes than those used for PCR set up.
 - a. Pipette 1 μL of Positive Control into the pre-labeled Positive Control reaction tube.
 - b. Add 49 μL of the master mix prepared above.
 - c. Briefly spin tube and add 30 μL of mineral oil to prevent evaporation.
 - d. Close the reaction tube and place on ice.

6. Place all tubes in a thermal cycler and perform the following program:

94° C for 4 minutes

94° C for 45 seconds

55° C for 45 seconds

72° C for 45 seconds

72° C for 10 minutes

} 30 - 35 cycles

TECHNICAL HINTS

- Thaw all reagents completely on ice before use.
- Use either Random Primers or Oligo (dT) for Reverse Transcription.
- The recommended annealing temperature is 55° C.
- To minimize the risk of amplicon contamination of the Primer Pairs and other PCR reagents, the following precautions are recommended:
 - PCR reactions should be set up in an area separate from where PCR products are analyzed.
 - Pipettes and tube racks should be specifically designated for PCR.
 - Use aerosol barrier pipette tips.
- Follow the steps below to determine the number of PCR reactions and to calculate the amount of PCR master mix necessary.
 1. Determine the number of cDNA samples that will be analyzed. Include a positive and negative control. Add 2 to the number of cDNA samples to account for the two controls.
 2. Multiply the number of samples by a factor of 1.1 to account for pipeting volume. This is the number of reactions for which the master mix should be made.For example, the master mix for 3 cDNA samples should be:
 - 3 cDNA samples will be analyzed.
 - Plus 2 for negative and positive controls = 5
 - 5 x 1.1 for pipeting volume = 5.5
- Primer Pairs are not validated for use in kinetic RT-PCR.

ANALYSIS OF RESULTS

The PCR products can be analyzed by 1.5 - 2% agarose gel electrophoresis. For predicted sizes of PCR products, refer to Table 2.

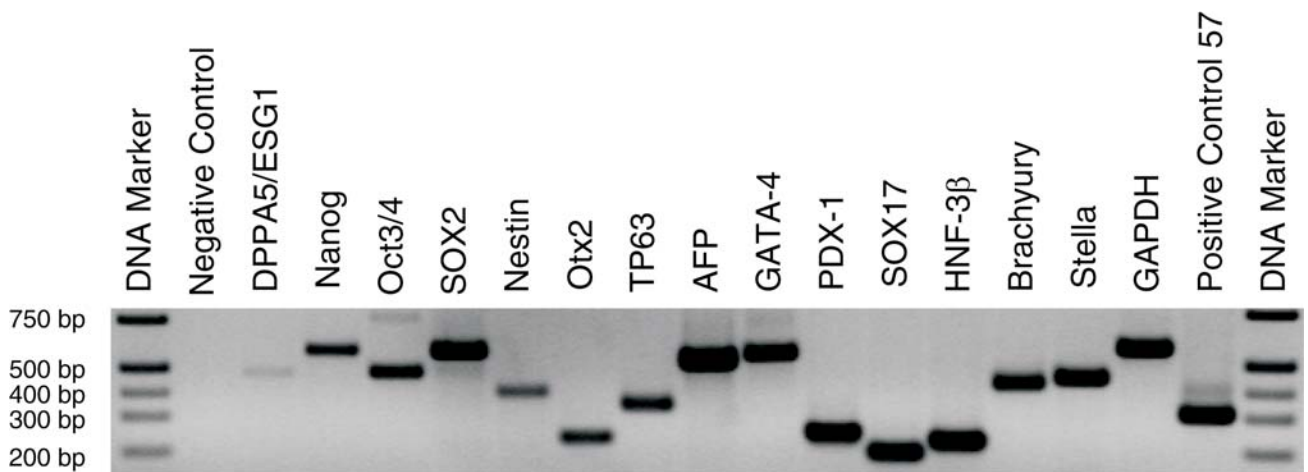


Figure 1: PCR products derived from various tissue samples were separated by agarose gel electrophoresis.

APPENDIX OF PCR PRODUCTS

Table 2: Predicted sizes of PCR products provided in the Human Pluripotent Stem Cell Assessment Primer Pair Panel.

Gene	Primer Pair Catalog #	GenBank Accession #	cDNA Product Size (bp)	Genomic Product Size (bp)	Comments
AFP	RDP-324	NM_001134	537	3804	—
Brachyury	RDP-331	NM_003181	430	3387	—
DPPA5/ESG1	RDP-319	NM_001025290	484	1039	—
GAPDH	RDP-39	M33197	576	861	576 bp product also seen from pseudogenes.*
GATA-4	RDP-325	NM_002052	569	9413	—
HNF-3 β	RDP-328	NM_021784 (variation 1) NM_153675 (variation 2)	230	230	Amplifies both splice variants to give the same size product.
Nanog	RDP-320	NM_024865	596	1974	596 bp product also seen from pseudogenes.*
Nestin	RDP-148	NM_006617	406	2341	—
Oct3/4	RDP-321	NM_002701 (variation 1) NM_203289 (variation 2)	486	1031	486 bp product also seen from pseudogene. Amplifies both splice variants to give the same size product.*
Otx2	RDP-330	NM_021728 (variation 1) NM_172337 (variation 2)	235	2067	Amplifies both splice variants to give the same size product.
PDX-1	RDP-326	NM_000209	262	3972	—
SOX2	RDP-323	NM_003106	591	591	—
SOX17	RDP-327	NM_022454	194	807	—
Stella	RDP-332	NM_199286	445	5471	445 bp product also seen from pseudogenes.*
TP63	RDP-329	NM_003722	358	2636	—
Positive Control 57	—	—	320	—	Synthetic double-stranded DNA.

bp = base pairs

*Pseudogenes will not affect performance in properly DNase treated samples.

APPENDIX OF RELATED PRODUCTS

Table 3: *Related products available from R&D Systems.*

Molecule	Catalog #	Product Description
AFP	AF1369 DAFP00 MAB1369 MAB13691	Affinity Purified Polyclonal Antibody Quantikine [®] ELISA Kit Monoclonal Antibody (Clone 189506) Monoclonal Antibody (Clone 214107)
Brachyury	AF2085 BAF2085	Affinity Purified Polyclonal Antibody Biotinylated Affinity Purified Polyclonal Antibody
DPPA5/ESG1	AF3125 BAF3125	Affinity Purified Polyclonal Antibody Biotinylated Affinity Purified Polyclonal Antibody
GATA-4	AF2606 BAF2606	Affinity Purified Polyclonal Antibody Biotinylated Affinity Purified Polyclonal Antibody
HNF-3 β	AF2400 BAF2400	Affinity Purified Polyclonal Antibody Biotinylated Affinity Purified Polyclonal Antibody
Nanog	AF1997 BAF1997	Affinity Purified Polyclonal Antibody Biotinylated Affinity Purified Polyclonal Antibody
Nestin	IC1259A IC1259F IC1259P MAB1259	Labeled Monoclonal Antibody (Clone 196908) Labeled Monoclonal Antibody (Clone 196908) Labeled Monoclonal Antibody (Clone 196908) Monoclonal Antibody (Clone 196908)
Oct3/4	AF1759 BAF1759 IC1759P MAB1759	Affinity Purified Polyclonal Antibody Biotinylated Affinity Purified Polyclonal Antibody Labeled Monoclonal Antibody (Clone 240408) Monoclonal Antibody (Clone 240408)
Otx2	AF1979 BAF1979 MAB1979	Affinity Purified Polyclonal Antibody Biotinylated Affinity Purified Polyclonal Antibody Monoclonal Antibody (Clone 246826)
PDX-1	AF2419 BAF2419 IC2419P MAB2419	Affinity Purified Polyclonal Antibody Biotinylated Affinity Purified Polyclonal Antibody Labeled Monoclonal Antibody (Clone 267712) Monoclonal Antibody (Clone 267712)
SOX2	AF2018 BAF2018 IC2018A IC2018P MAB2018	Affinity Purified Polyclonal Antibody Biotinylated Affinity Purified Polyclonal Antibody Labeled Monoclonal Antibody (Clone 245610) Labeled Monoclonal Antibody (Clone 245610) Monoclonal Antibody (Clone 245610)
SOX17	AF1924 BAF1924 MAB1924	Affinity Purified Polyclonal Antibody Biotinylated Affinity Purified Polyclonal Antibody Monoclonal Antibody (Clone 245013)
Stella	MAB2566	Monoclonal Antibody (Clone 283910)
TP63	AF1916 BAF1916 MAB1916	Affinity Purified Polyclonal Antibody Biotinylated Affinity Purified Polyclonal Antibody Monoclonal Antibody (Clone 241631)

TROUBLESHOOTING GUIDE

Problem	Suggestions
No PCR products obtained.	Operator error may have occurred during reaction assembly. Run positive control reaction.
	Unsuccessful cDNA synthesis. Use the GAPDH primer pair as a control to show that the RT reaction was successful.
	RNA may be degraded. Check the integrity of the RNA by gel electrophoresis. A good quality RNA preparation should show the 28S and 18S ribosomal RNAs in an approximate 2:1 ratio. If RNA appears degraded, repeat the RNA isolation.
	RNA secondary structure may be inhibiting cDNA synthesis. This can often be overcome by using random primers.
	The target RNA concentration may be too low. Increase the amount of cDNA template used in the PCR reaction or the number of cycles used to amplify the cDNA.
Smearing or bands of unpredicted size.	Non-specific priming may have occurred. Use less cDNA or reduce the number of cycles.

REFERENCES

1. Evans, M.J. and M.H. Kaufman (1981) *Nature* **292**:154.
2. Martin, G. (1981) *Proc. Natl. Acad. Sci. USA* **78**:7634.
3. Thomson, J.A. *et al.* (1998) *Science* **282**:1145.
4. Rosner, M.H. *et al.* (1990) *Nature* **345**:686.
5. Niwa, H. *et al.* (2000) *Nat. Genet.* **24**:372.
6. Pesce, M. *et al.* (2001) *Stem Cells* **19**:271.
7. Chambers, I. *et al.* (2003) *Cell* **113**:643.
8. Mitsui, K. *et al.* (2003) *Cell* **113**:631.
9. Cavaleri, F. and H.R. Scholer (2003) *Cell.* **113**:551.
10. Pera, M.F. *et al.* (2003) *Methods Enzymol.* **365**:429.
11. Bhattacharya, B. *et al.* (2004) *Blood* **103**:2956.

NOTES