

DESCRIPTION

Species Reactivity	Human
Specificity	Detects human CD31/PECAM-1. In Western blots, no cross-reactivity with recombinant human (rh) E-Selectin, rhICAM-1, -2, -3, rhVCAM-1, or recombinant mouse VCAM-1 was observed.
Source	Monoclonal Mouse IgG ₁ Clone # 9G11
Purification	Protein A or G purified from hybridoma culture supernatant
Immunogen	Activated HUVEC human umbilical vein endothelial cells
Formulation	Lyophilized from a 0.2 µm filtered solution in PBS with Trehalose. See Certificate of Analysis for details.

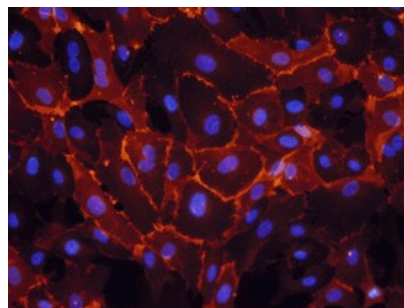
APPLICATIONS

Please Note: Optimal dilutions should be determined by each laboratory for each application. *General Protocols* are available in the *Technical Information* section on our website.

	Recommended Concentration	Sample
Western Blot	1 µg/mL	Recombinant Human CD31/PECAM-1 (Catalog # ADP6)
Immunocytochemistry	8-25 µg/mL	See Below
Immunoprecipitation	Lampugnani, M.G. <i>et al.</i> (1992) J. Cell Biol. 118 :1511.	

DATA

Immunocytochemistry



CD31/PECAM-1 in HUVEC Human Cells. CD31/PECAM-1 was detected in immersion fixed HUVEC human umbilical vein endothelial cells using 10 µg/mL Human CD31/PECAM-1 Monoclonal Antibody (Catalog # BBA7) for 3 hours at room temperature. Cells were stained with the NorthernLights™ 557-conjugated Anti-Mouse IgG Secondary Antibody (red; Catalog # NL007) and counterstained with DAPI (blue). View our protocol for [Fluorescent ICC Staining of Cells on Coverslips](#).

PREPARATION AND STORAGE

Reconstitution	Sterile PBS to a final concentration of 0.5 mg/mL.
Shipping	The product is shipped at ambient temperature. Upon receipt, store it immediately at the temperature recommended below.
Stability & Storage	<p>Use a manual defrost freezer and avoid repeated freeze-thaw cycles.</p> <ul style="list-style-type: none"> ● 12 months from date of receipt, -20 to -70 °C as supplied. ● 1 month from date of receipt, 2 to 8 °C, reconstituted. ● 6 months from date of receipt, -20 to -70 °C, reconstituted.

BACKGROUND

The CD31 adhesion molecule, also known as PECAM-1, is expressed in large amounts on endothelial cells at intercellular junctions and on T cell subsets, and to a lesser extent on platelets and most other leukocytes such as monocytes and neutrophils. CD31 binds to itself homotypically, and also to the leukocyte integrin α_vβ₃ heterotypically. CD31 is required for the transendothelial migration of leukocytes through intercellular junctions of vascular endothelial cells. CD31 has been found in human plasma, and the presence of this circulating isoform is suggested to modulate the transendothelial migration of leukocytes.